



Global Schools
Foundation



GSF Sustainability Report

Shaping A Green Future



Global Centre
for Education
Excellence

YEAR 2022

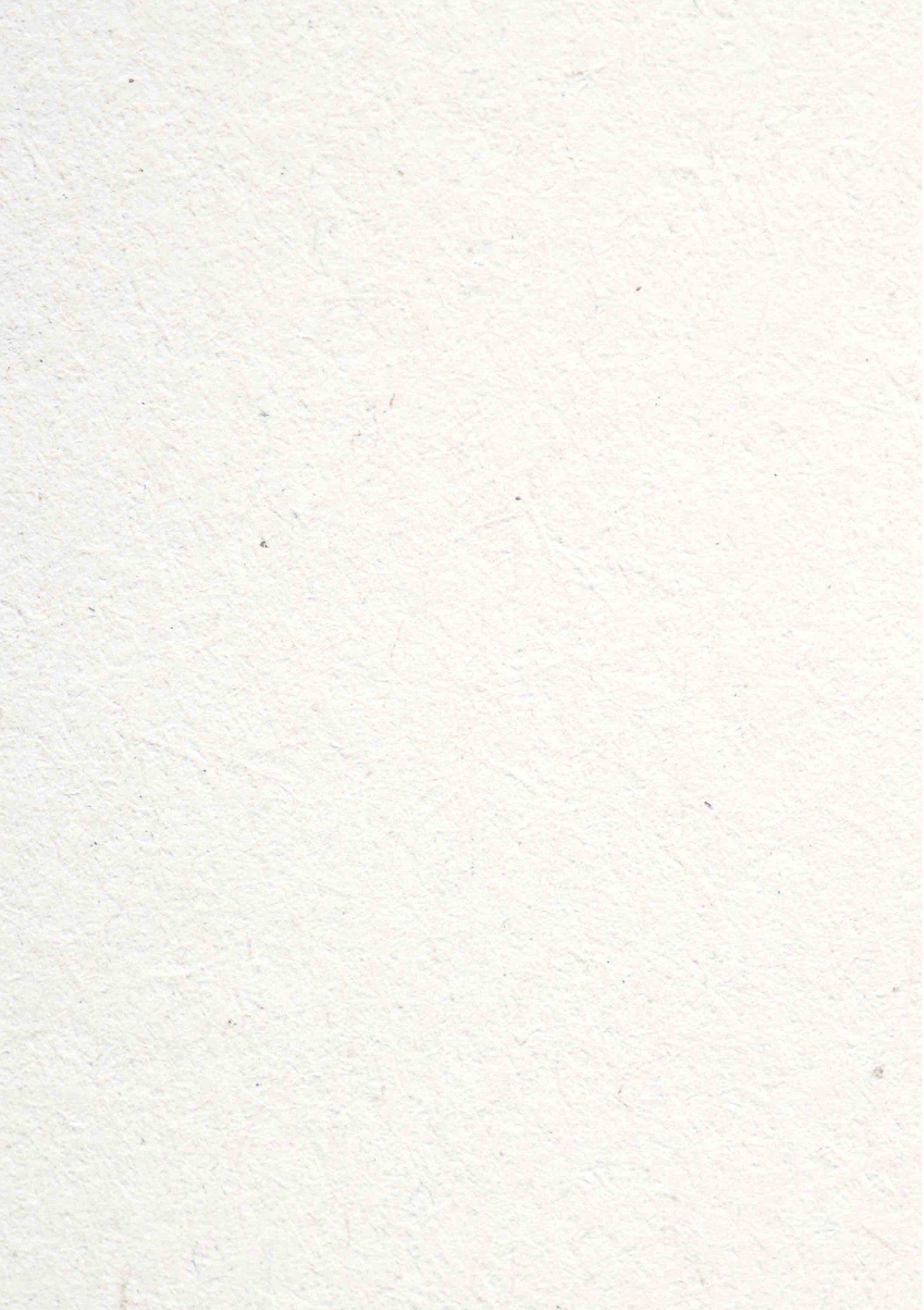


Table of Contents

PAGE_2
EXECUTIVE SUMMARY

PAGE_4
COMPANY PROFILE

PAGE_7
KEY HIGHLIGHTS OF THE REPORT

PAGE_8
CHAIRMAN'S MESSAGE

PAGE_10
MESSAGE FROM LEADERS

PAGE_12
OUR APPROACH TO SUSTAINABILITY

PAGE_16
**STUDENT LEARNING:
CARRYING THE FLAME FORWARD**

PAGE_24
ENVIRONMENTAL STEWARDSHIP

PAGE_32
SOCIAL RESPONSIBILITY

PAGE_37
GOVERNANCE

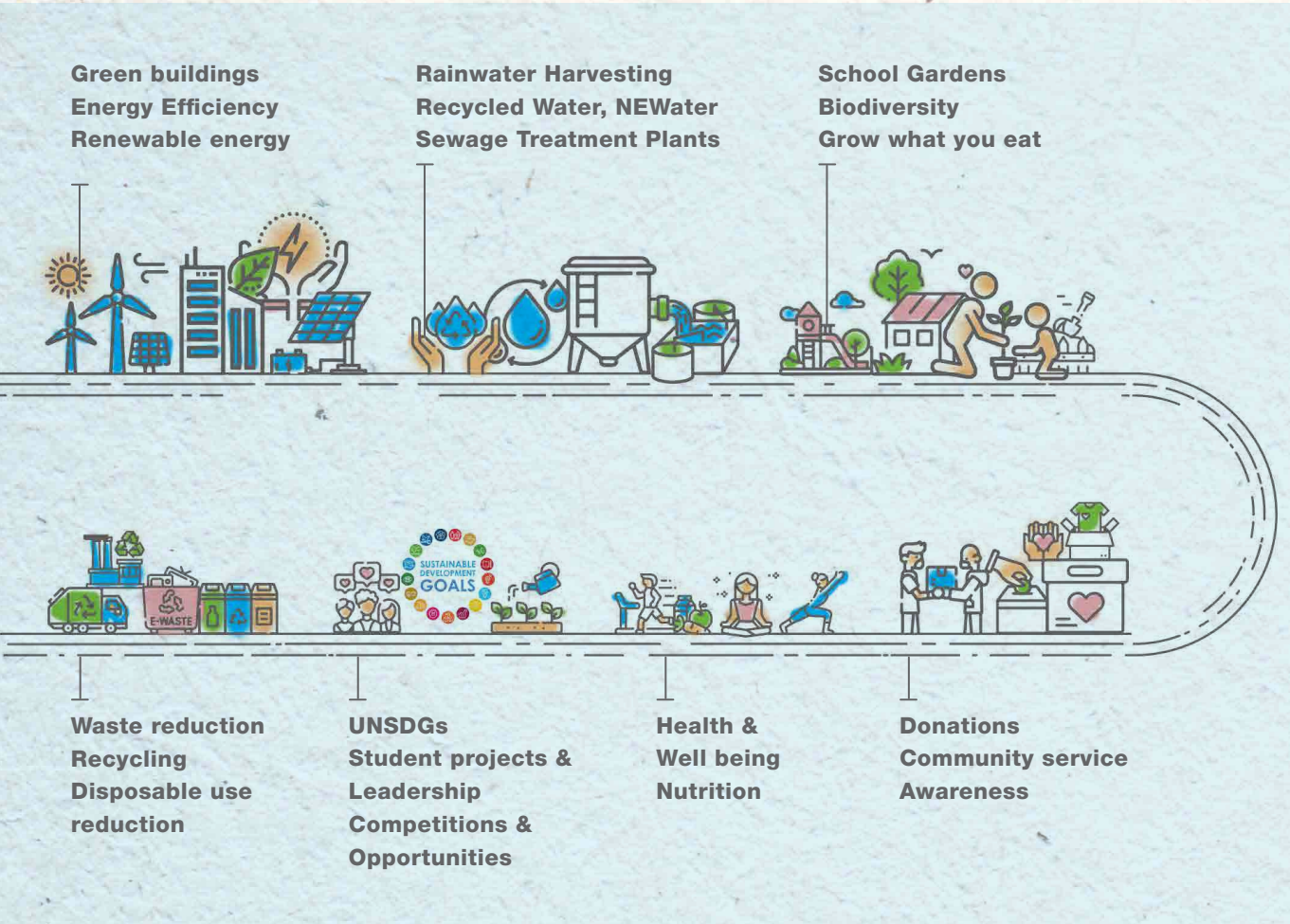
PAGE_41
GRI GUIDELINES

PAGE_42
REGARDING THIS REPORT

PAGE_43
GRI CONTENT INDEX

Executive Summary

SUSTAINABILITY AT GSF SCHOOLS



SUMMARY OF THE REPORT

Sustainability has undeniably become a pervasive buzzword, ubiquitous in conversations ranging from business strategies to personal choices. Its growing popularity can be attributed to the urgent need to address the mounting environmental and social challenges that our planet faces.

While the concept of sustainability inherently embodies the pursuit of long-term balance between economic growth, social equity, and ecological well-being, its importance is undeniably moved beyond mere rhetoric, with many institutions and organisations genuinely embracing actions to ensure that they play a meaningful role through tangible, impactful practices that will truly safeguard our planet for future generations.

Executive Summary

For the Global Schools Foundation, sustainability has been part of our DNA for long, and we have taken giant steps towards fully embracing its essence. Through this Sustainability Report, we aim to highlight how the organisation's commitment to adopting a Green way of life has made a deep impact in the minds of the students, and a positive change in the community. This report focuses on the year-long initiatives that have contributed to fulfilling this promise.



This report has been prepared in accordance with the GRI Standards 2021 - a universal blueprint which delivers on the highest level of transparency on organisational impacts on economy, environment and people. Through this report, we will be covering various aspects of sustainability that are practised within the Foundation's purview, including our framework, our alignment with UNSDGs and our materiality assessment which helped us prioritise our efforts based on key identifiable sustainability issues.

We have highlighted GSF's involvement to bring about a green footprint through curriculum mapping, empowerment and engagement of students, and of course contributions

towards implementation of sustainable practices across GSF's schools and offices. Our efforts were towards making students environmentally conscious and socially responsible individuals; and giving them a platform through projects, exhibitions, seminars, and podcasts to showcase their ideas on a global forum.

We have also highlighted our environmental stewardship with efforts directed towards reduction of emissions and our carbon footprint through energy conservation and management, water conservation, waste management, and the promotion of green building features. GSF also aligns its sustainability initiatives with the UN Sustainable Development Goals (UNSDGs), contributing to a more sustainable future. Lastly, our key social responsibility practices are highlighted which include donation drives, community engagement programmes, and initiatives promoting staff welfare, diversity, and health and safety. Our governance practices involve ethical behaviour, personal data protection, management diversity, audits and certifications.

Sustainability encompasses various dimensions, and we are committed to continually enhance our strategies and broaden our scope in the future. With a sense of humility, we present this initial report, acknowledging the vast opportunities for progress and advancement in all aspects as we gather more data and set new targets in the years ahead.


Company Profile

Global Schools Foundation is a Singapore-based institution dedicated to providing quality education in the K12 sector. Its mission is to cultivate and nurture young minds into global leaders of the future through academic excellence, skills development, personality development and the physical and mental well-being of students.

The 1st GSF school was established in Singapore in 2002, and in the last two decades, the foundation has 10 international brands and 35 campuses under its umbrella, spread over 10 countries across East Asia (Japan & Korea), Southeast Asia (Singapore, Malaysia, Cambodia, Philippines, Vietnam & Thailand), Middle East (Saudi Arabia & United Arab Emirates) and India which provide world class education to over 32,000 students from 70+ nationalities.

 **10**
Brands

 **35**
Campuses  **10**
Countries

 **32,000+**
Students

 **3,000+**
Staff

 **70+**
Nationalities of Students

The brands under GSF include Global Indian International School, One World International School, Dwight International School, Seoul; Glendale International School, Regent International School, Harrods International Academy, Chinese International School Manila, and Domuschola International School. Our schools offer the British curriculum, the International Baccalaureate (IB), American Common Core and CBSE.



One World International Schools

- Nurturing children to be who they are and what they want to be
- The school strives for personal growth and academic excellence for all members of the community.

Singapore
Riyadh: Saudi Arabia
Bengaluru: India



Vikaasa Group of School

Madurai: India



Nottingham High School

- Encouraging intellectual curiosity to champion individual growth
- With a rich history of over 500 years, Nottingham High School is one of the most well-reputed schools in the United Kingdom

United Kingdom



Regent International Schools, Malaysia

- Pioneers the field of education in Malaysia which was established with the objective of providing affordable international education to all.

Kuala Lumpur: Malaysia



Glendale Education

- Glendale is a trailblazer and a pioneer in cutting-edge global pedagogies group of international schools catering to all major curriculums including CBSE, Cambridge and IB PYP

Hyderabad: India
Dubai: UAE



Global Indian International Schools

- Award-winning multi-curricula Smart campuses with a vision to create global citizens.
- The school's fundamental philosophy is to provide the highest quality education using the best technological platforms at a fee range that is affordable to many families.

Singapore
KL: Malaysia
Abu Dhabi
Dubai: UAE
Noida
Pune
Ahmedabad
Bengaluru: India
Tokyo: Japan



Dwight International School, Seoul

- Developing inquisitive, informed and ethical citizens for a better world
- Dwight, Seoul is the first fully authorised IB continuum school in the city, which believes that every child has a spark of genius within

Seoul : South Korea



Harrods International Academy, Cambodia

- With the aim to become the top international school in Cambodia and as a member of the International Primary Curriculum (IPC) organisation, HIA offers a uniquely high standard Singaporean-British curriculum in the Kingdom of Cambodia

Phnom Penh: Cambodia



Chinese International School, Manila

- Nurture Global Citizens

Manila: Philippines

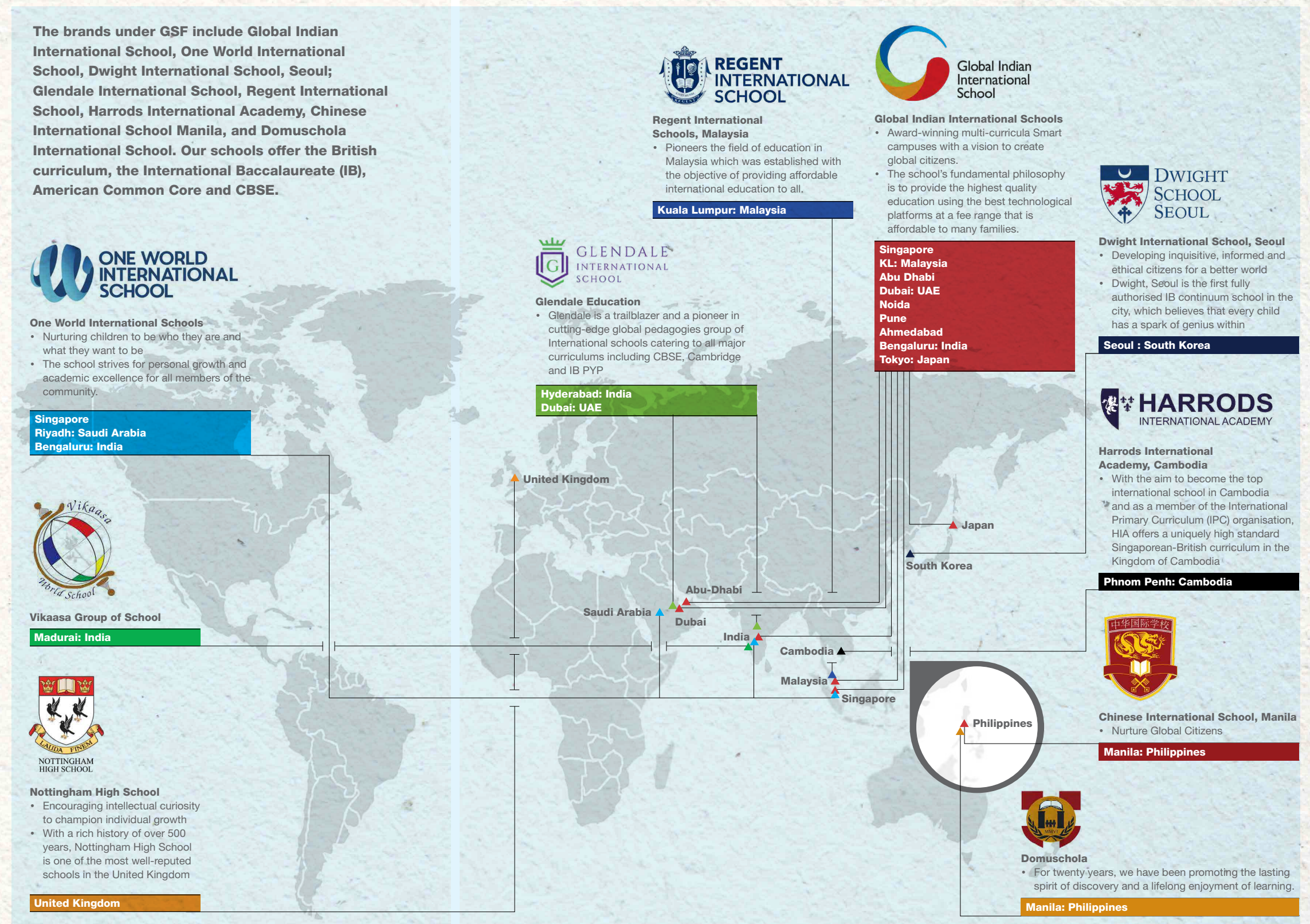


Domuschola

- For twenty years, we have been promoting the lasting spirit of discovery and a lifelong enjoyment of learning.

Manila: Philippines

Company Profile



Company Profile



OWIS Students at beach clean-up activity

The foundation is governed by an eminent Board whose president is Ambassador Aftab Seth and Executive Chairman and Cofounder is Mr Atul Temurnikar. GSF enjoys the patronage of eminent personalities from diverse fields, including Mr Chandu Borde, Mr NR Narayana Murthy, Ambassador Karan Singh Thakral and other eminent personalities in the world.

The GSF schools are ranked one of the best for their results in IB Diploma, Cambridge and CBSE programmes. Our admitted to world's leading universities including such as Oxford, Cambridge, UC Berkeley and Ivy League colleges such as Harvard, and others.

Our pursuit of excellence and our embrace of best practices within the industry has been recognised all over the world, with the Foundation winning more than 450 national and international awards in excellence from various reputed organisations such as Asia Pacific Quality Organisation (International Asia Pacific Quality Award), Malaysia Productivity Council (Prime Minister's Award for Quality), Enterprise Singapore (Singapore Quality Class Star Award), etc., In June 2021, GSF was recognized as the world's most awarded school network.

Key Highlights of the report



5S Sustainability framework : **Based on the whole school approach** we developed our framework, which we call “**5S of Sustainability**”. By implementing targeted activities and monitoring progress, we strive to cultivate environmental consciousness, social responsibility, and sustainable practices.



Average GHG emissions per capita is **0.54 MTCO₂**



ISO 9001, 21001 and 45001 certifications :
For excellence in education, continuous improvement and safety and security



Green buildings: By using of **Latest efficient technologies** in our schools exemplify the harmonious blend of education and environmental stewardship.



UNSDGs in activities: Signing the
Global Schools pledge to work for UNSDGs



15 Awards in the field of sustainability: Our dedication to sustainability has been recognized with **15 prestigious awards**, a testament to our commitment to creating a greener future and inspiring the next generation of eco-conscious leaders.

Chairman's Message

Sustainability is an essential aspect of our educational philosophy. It has been more than 20 years since the Global Schools Foundation has been committed to the cause of green and sustainable development.

It is our responsibility to instill a deep sense of environmental awareness in our students, and GSF schools have been doing that for the past two decades with responsibility and sense of purpose.

In the past decade, sustainability took a place of vital importance in the emerging digital economy. The world started to recognise the necessity and urgency of going green, not just for the sake of a better present, but also for the sake of a better future. Which is why it gives me great pride in sharing that GSF was ahead of the curve when it came to adapting to this idea.

The Foundation recognised the need to grow within the limits of green living, and went a step further to spread the knowledge through their best ambassadors - their students. GSF schools have taken gigantic and focussed steps to ingrain the idea of sustainability into the learning environment of its students. Our curriculum, our operational procedures, our policies were all revolving around best practices that have a positive impact on the mindsets of the new generation, who will in turn ensure a good impact on the environment. Our educational programmes are designed to instill in our students a deep sense of responsibility



**MR. ATUL
TERMUNIKAR**
Chairman and
Co-Founder
Global Schools
Foundation

towards the environment and the importance of sustainable practices. We believe that every student can make a meaningful impact on the environment, and we strive to equip them with the knowledge and skills to make a difference.

GSF schools are signatories of the United Nations Sustainable Development Goals (SDGs). These goals provide a framework for creating a better and more sustainable future for all, and we are committed to contributing to their realization through our educational efforts.

We are also committed to collaborating with local communities to create sustainable practices that benefit the environment. We encourage our students to participate in community-based projects, promoting environmental sustainability and creating awareness about the importance of preserving natural resources.

At GSF, sustainability is not just a buzzword, but a way of life. We believe that we have a moral obligation to create a better and more sustainable future for all. By working together, we can make a meaningful impact on the environment and ensure a brighter future for future generations.

“

Our efforts to reduce our carbon footprint and minimize waste across all GSF schools is not limited to just implementing the 3Rs of green living - reduce, reuse and recycle. In fact, we have embraced and implemented energy-efficient practices, including the use of renewable energy sources, sustainable materials and reduction of wastage to promote this idea in all our schools.

”

We will continue to prioritise sustainability in all aspects of our operations, curriculum, and policies. We believe that every small action towards sustainability can make a significant impact, and we encourage our students, staff, and community members to join us in this endeavor. Together, we can create a better and more sustainable future for all.



[Scan to read more](#)



Message from Leaders



MR. RAJEEV KATYAL,
Chief Operating
Officer, Global Schools
Foundation

Sustainability lies at the core, as we aim to equip our students with the knowledge, skills, and values needed to navigate the challenges of the 21st century and contribute positively to society.

In this report, you will find a comprehensive overview of our sustainability initiatives across all our schools. Together, we have implemented innovative practices, adopted environmentally friendly technologies, and fostered a culture of environmental awareness. From Eco-friendly initiatives for our students to green infrastructure, our collective actions have made a tangible difference.

We have focused on various key areas, including student activities, UNSDGs, curriculum integration, energy conservation, school gardens, recycling programmes, and community engagement. Our collective efforts have yielded significant results, demonstrating the transformative power of collaboration and shared responsibility.

I am proud of our dedicated staff, faculty, students, and parents, who have embraced sustainability as a fundamental pillar of our educational philosophy. In addition to highlighting our achievements, this report underscores our commitment to continuous improvement. We understand that sustainability is a journey, and we remain dedicated to setting new benchmarks, exploring innovative solutions, and staying ahead of emerging environmental challenges. By fostering a culture of learning and adaptation, we ensure that our group of schools continues to lead by example and inspires others to follow suit.

“

Let us use this report as a catalyst for further dialogue, inspiration, and action. By working together, we can ensure that our group of schools remains at the forefront of sustainability, creating a better future for our students and leaving a positive impact on our planet.

”

Message from Leaders



**MR RATHIN
KHANDHADIA,**
Director, Global Centre
for Education Excellence,
Global Schools Foundation

At Global Schools Foundation, we firmly believe that education plays a vital role in shaping a sustainable future for our planet. We recognize the urgent need to address global challenges such as climate change, resource depletion, and social inequality, and we are dedicated to taking concrete actions towards a more sustainable world.

At GSF schools, community care and environmental stewardship have always been paramount.

“

For the first time GCEE has implemented a structured approach to capture and document all the data and activities related to sustainability at the school level. This allows us to effectively monitor and evaluate our sustainability efforts for our group of schools.

”

Moving forward, we are fully committed to making significant progress and continuously advancing our sustainability practices in the years ahead.

We have adopted a Whole School Approach for sustainability which means we practice in our operations, management and procurement what we teach to our students in classrooms. With the whole school approach as our base we have developed our framework, which we call “5S of Sustainability”. Our schools have integrated UNSDGs into student activities, encouraging environmental consciousness and social awareness among our young learners. Through innovative programmes and initiatives, we foster an environment where sustainability is embraced as a way of life.

Our commitment to sustainability extends to our operations, management and school premises as well. We have calculated carbon footprint for our schools and a sustainability index is being monitored for our schools, which gives baseline sustainability related data. We are implementing measures to reduce our ecological footprint, such as energy-efficient practices, waste reduction strategies, and responsible resource management.

Let us be inspired by our accomplishments and motivated to continue pushing boundaries, finding new ways to integrate sustainability into all aspects of our business. I would like to express my gratitude to all our staff, students, parents, partners, and the broader community for their unwavering support in making sustainability a core value of Global Schools Foundation. Together, we can foster a sustainable world for generations to come.



**MR. KAUSTUBH
BODHANKAR,**
Sr Deputy Chief Executive
Officer, Deputy Chief
Investment Officer, GSF

As an educational institution, we have a unique opportunity to shape young minds and instill in them a deep sense of responsibility towards the environment and society. This report highlights our progress and achievements in fostering sustainable practices across our schools and offices, and it serves as a reminder of the transformative impact we can have on our students, communities, and the planet as a whole.

Throughout the year, we have implemented various sustainability initiatives that have positively contributed to our ecological footprint. We have taken significant steps to reduce energy consumption by optimizing our facilities, and implementing energy-efficient technologies. Very soon we are investing in renewable energy sources too. Additionally, we have actively promoted waste reduction and recycling programmes, encouraging everyone to embrace the principles of the circular economy.

“

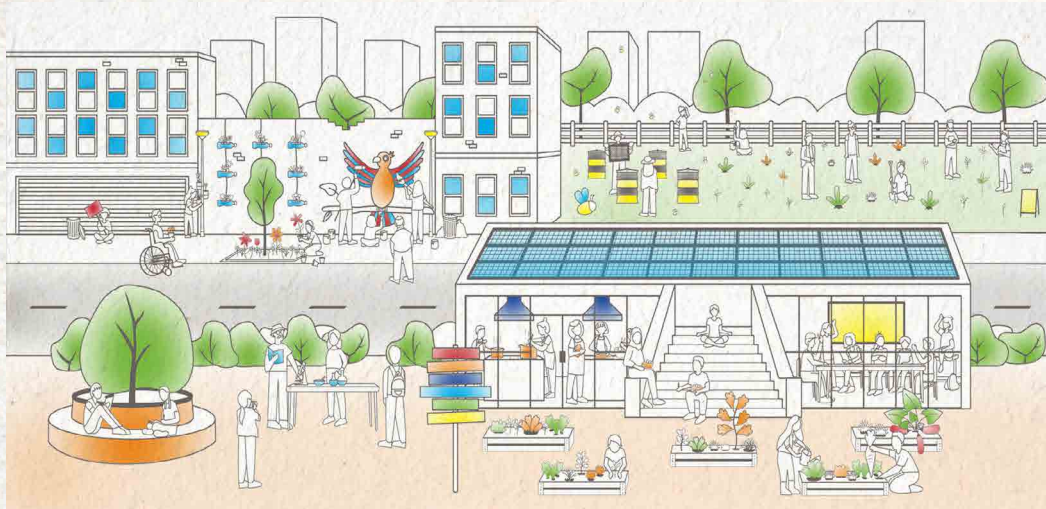
We have worked on our own framework of incorporating sustainability into all aspects of our functioning. Students being our main focus, we work on giving them opportunities, activities and projects related to sustainability. The aim is to have maximum participation and no child is to be left behind in this endeavour.

”

Skill development of students as well as staff and stakeholder engagement is also given due importance. Our School management and operations also incorporate sustainability, we understand the need to lead by example. Since students spend considerable time in school premises it is important that they get the best possible facilities and motivation.

While we celebrate the achievements outlined in this report, we also acknowledge that there is still much work to be done. It is important to acknowledge that sustainability is a journey, and we are continuously learning and evolving along the way. This report serves as a foundation upon which we will build and expand our sustainability initiatives in the years to come. We will strive to set ambitious targets, adopt innovative practices, and collaborate with like-minded organisations to further advance our sustainability goals.

Our Approach to Sustainability



A whole school approach to sustainability involves integrating sustainable practices into every aspect of a school's operations, curriculum, and culture. This way emphasizes the importance of sustainability in education and encourages students, teachers, and staff to develop an understanding of sustainability issues and to take action to reduce their environmental impact.

WHOLE SCHOOL APPROACH TO SUSTAINABILITY

Our adoption of a whole-school approach to sustainability is based on the understanding that sustainability is a multifaceted issue that affects all aspects of our lives. It is not limited to just the environment but also encompasses social, economic, and cultural aspects. Therefore, a comprehensive approach that involves all stakeholders in the school community is necessary to ensure sustainable practices. We recognize that sustainable practices are not just an add-on, but rather an integral part of a school's mission and culture.

This approach to sustainability in education is also supported by other international frameworks such as UNESCO ESD 2030 which sees it as critical to the attainment of sustainability in learning and education environments. Similar commitments are made in the Berlin Declaration on Education for Sustainable Development (2021) and the UNECE ESD Strategy Concept Note (2021).

Some of the benefits of a whole-school approach to sustainability include:



Creating a culture of sustainability



Educating the next generation of sustainability leaders



Reducing the school's environmental footprint



Building partnerships with the community

Our Approach to Sustainability

MATERIALITY ASSESSMENT

We carried the materiality assessment for our first report based on GRI standards 2021. We reviewed material aspects of various educational institutes in their sustainability report. We had informal and formal discussions with our leadership team, student councils, teachers, staff and parents regarding sustainability and our impact in various fields.

We aimed for a meaningful assessment and framework for sustainability which required a consistent approach. After research of what an educational institute's impact could be, we had focussed discussions with our leadership team.

The following stages were identified and followed to identify material aspects for our schools:

Step 1:

Desk research to identify main issues

Step 2:

Identification of major stakeholders (internal and external)

Step 3:

The development and delivery of a series of awareness sessions to internal stakeholders

Step 4:

Review meeting of issues with Leadership team

Step 5:

Finalise and communicate Materiality issues through sustainability report

Material Aspects identified for GSF Schools



Governance

- Integrity & compliance
- Data security
- ESG policy & goals
- Occupational Health & Safety
- Employment - diversity & turnover



Students & learning

- Curriculum
- Student well being
- Student projects
- Awareness activities/celebrations
- Health, nutrition
- Student awards



Stakeholder connection

- Stakeholder surveys
- Donations
- NGO/University collaboration
- Competitions
- Community engagement & outreach



Skill development

- Training & career development
- Staff well being



School management & operations

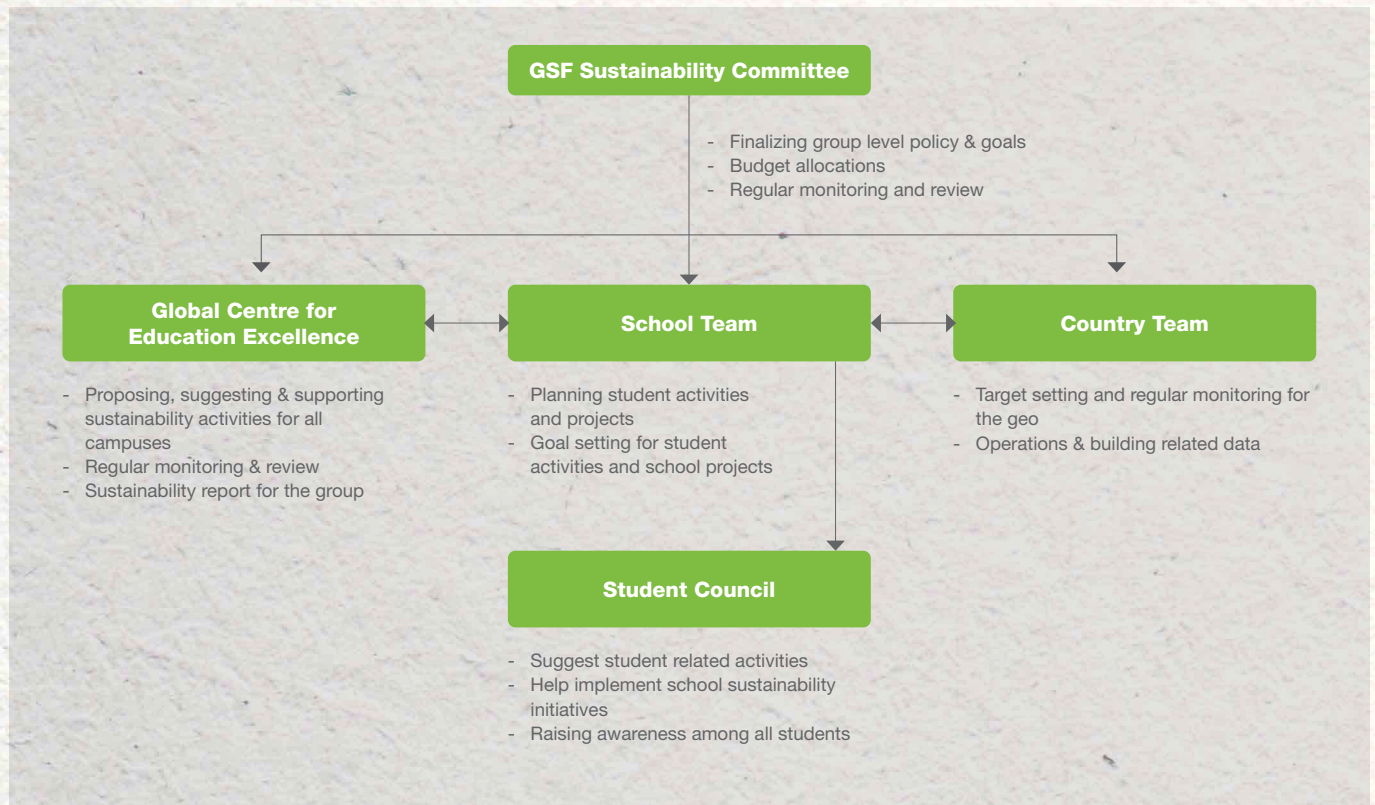
- GHG emissions
- Waste
- Gardens/Biodiversity
- Water
- Energy
- Procurement
- Transport

For the scope of this report we identified these material topics, where we have environmental, social or economic impact.

Our Approach to Sustainability

GOVERNANCE STRUCTURE FOR SUSTAINABILITY AT GSF

Good governance is a critical component for the sustainability of any organisation or institution, particularly multinational ones. We have worked on our processes and structures through which our organisation would be accountable and involved in planning and working for sustainability and having a positive impact on students , community and environment.



There is active involvement of leadership in sustainability and some projects are driven from leadership to the campuses. Students also have the opportunity to propose projects as part of Quality Circles, or curriculum projects and if having promising outputs are scaled up to the school level. The Sustainability committee is responsible for periodic review of ESG policy and goals for the group.

Our Approach to Sustainability

5S SUSTAINABILITY FRAMEWORK

Taking strong strides towards a green footprint and sustainable growth

With the whole school approach as our base we developed our framework, which we call “5S of Sustainability”. This is an adaptation of frameworks being used in higher education and multiple educational institutions.

Students & Learning

Every campus has a calendar for sustainability related activities for students and it includes seminars, clean-ups, recycling drives, Environmental days (earth day, biodiversity day, water day etc.) celebrations. Additionally students undertake sustainability related hand-on projects in various subjects.

Stakeholder connect

Our aim is maximum participation from students as well as staff and communicate our projects in an effective manner to motivate everyone. We actively engage parents in our programmes. Increasingly our students also are having an impact in their local communities with their passionate initiatives.

Structure & Governance

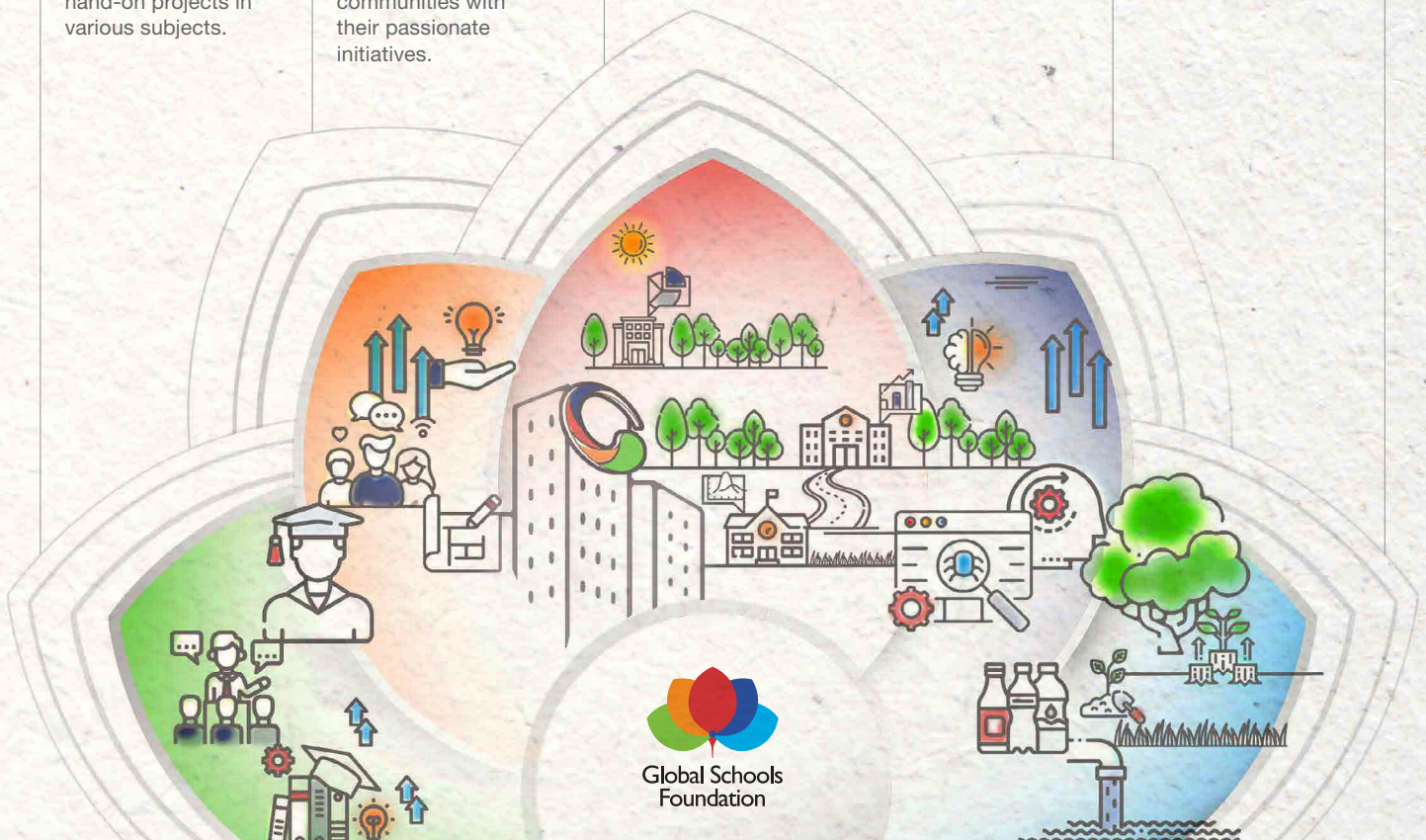
Our schools have a sustainability policy and commitments, Sustainability team at each campus, regular planning and monitoring of activities.

Skill Development

We provide the latest knowledge & skills in this field to our students and staff. We aim to provide good research opportunities to students and platform in international competitions

School Management & Operations

We provide a green and healthy school campus and grounds. We have projects which include reduction of carbon footprint, waste and water use.



Student learning : Carrying the flame forward

Today's young adults have grown up in a rapidly changing world and possess a profound awareness of the importance of climate change and global warming as one of the most significant challenges of our time. One of our purpose of educating is fostering a culture of environmental stewardship among our main stakeholders students which would create sustainability conscious and knowledgeable future leaders and citizens.



Students taking care of garden at GISS Dubai

At GSF, our students understand that this issue is not just a topic of discussion, but a crucial societal problem that will have a significant impact on their generation. With their eyes on the future and their future leadership roles, they recognise the importance of taking action to address this problem. By integrating sustainability into our curriculum and implementing innovative environmentally friendly measures, we aim to cultivate a sense of responsibility towards living a sustainable lifestyle and creating a better world for future generations.

We offer high-quality and affordable education to students worldwide while promoting their creative and entrepreneurial abilities. We motivate our students to continuously develop themselves by exploring and experimenting, and to foster strong virtues and values. As a result, our graduates emerge as future leaders. We strongly advocate for quality education to be accessible to all children, regardless of their background or circumstances. We offer all inclusive, diverse and value-based learning welcoming all nationalities. Our system allows every student to blossom into a well-rounded young person.

Student learning : UNSDGs



CURRICULUM & ACTIVITIES LINKING TO UNSDGs

All United Nations Member States adopted the 2030 Agenda for Sustainable Development in 2015, which offers a collective framework for attaining peace and prosperity for both people and the planet, both now and in the future. The 17 Sustainable Development Goals (SDGs) lie at the core of this initiative, urging all nations to collaborate on urgent action, irrespective of their level of development. The SDGs recognise that eliminating poverty and deprivation is inextricably tied to initiatives that enhance health and education, reduce disparities, stimulate economic growth, all while confronting climate change and preserving our forests and oceans.

Sustainability initiatives are formulated to align with the curriculum, with the aim of inspiring students to broaden their perspectives beyond personal interests and to prioritise the welfare of others and the environment.

We partnered with the Global Schools Program to apply the principles of UNSDGs in all our schools. The Global Schools Program is an initiative of the UN Sustainable Development Solutions Network in support of UNESCO's Global Action Program on Education for Sustainable Development (ESD)



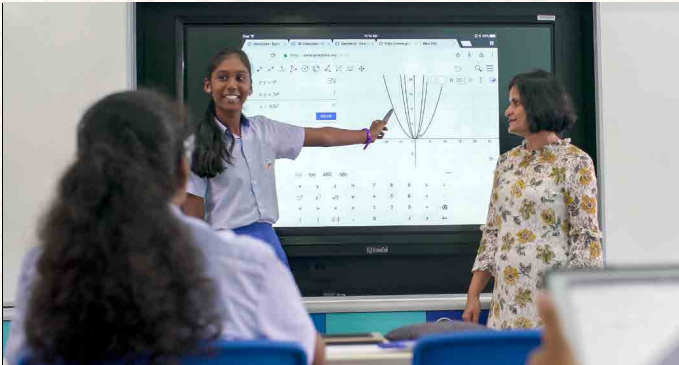
Student learning : UNSDGs

We offer a range of co-curricular activities aligned with the UNSDGs which allow students to gain practical experience in subjects beyond the syllabus. Our emphasis is also on providing practical experiences in addition to theoretical knowledge in classes, through hands-on experiences in the curriculum, extra-curricular activities, and quality circle projects. This approach allows students to learn the most through actions.

UNSDG RELATED ACTIVITIES



1 NO POVERTY
Donation by Harrods school students and staff



4 QUALITY EDUCATION
Kaizens, Digital Pedagogy



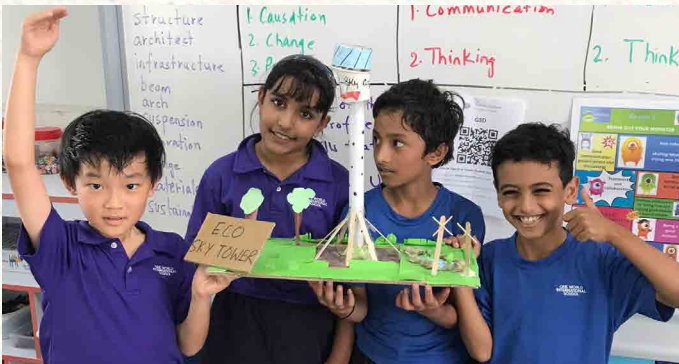
2 ZERO HUNGER
Food donation by GIIS Ahmedabad students and staff



6 CLEAN WATER AND SANITATION
World Water day celebration by GIIS East Coast



3 GOOD HEALTH AND WELL-BEING
Yoga, Mental well being, Happiness index



11 SUSTAINABLE CITIES AND COMMUNITIES
Students with their sustainable cities project

Student learning : UNSDGs



12 RESPONSIBLE CONSUMPTION AND PRODUCTION
Disposable bottle collection for recycling by Harrods International Academy, Cambodia



15 LIFE ON LAND
Trails & walks organised by WWF for GIIS East Coast



13 CLIMATE ACTION
Plantations by GIIS Singapore students in One million tree movement



14 LIFE BELOW WATER
Beach clean up by OWIS Singapore

No. of completed activities till march 2023 as per UNSDGs (For all schools)



Student learning : iCare



GMP Plus students in GHS Dubai Campus

iCARE IN GLOBAL MONTESSORI PLUS PROGRAMME

We have a special program called iCare in Global Montessori Plus Programme which is one of GHS's key initiatives to educate and sensitize young minds to understand the concept of sustainability and environmental stewardship. The purpose of this programme is to develop in the young minds a consciousness about environmental issues of the world they live in, building social awareness in students like discipline, cleanliness, safety measures and respect for others, imbibe in them love for nature by building awareness of flora and fauna, equip them to save our mother nature by making them aware of issues like global warming, endangered species, scarcity of water, air and water pollution and ways to combat them. Such awareness, in turn, creates a sense of care and a responsibility towards addressing such issues.

Equipped with such knowledge, a child in our kindergarten takes his first stride towards being a global citizen in its true sense. After all, these kids are the future leaders and responsible citiglobal citizens.

Process of iCare themes implementation



**Generating
Awareness**



**Use of
knowledge
assimilated**



**Assess student
understanding
of activity**



**Develop action
plans**



**Involve parents
& community**

Student learning : Experiential learning

EXPERIENTIAL LEARNING FOR ALL

Our students are engaged in activities that allow them to apply what they have learned in a practical setting, reflect on their experiences, and make connections between their experiences and the concepts or theories they have learned.

Outdoor Learning

“A mind that is stretched by a new experience can never go back to its old dimensions.”
Oliver Wendell Holmes



OWIS Singapore students at a school trip



Students learning at Nature photography workshop

We also believe in giving outdoor learning experience to our students which is a unique experience that has many benefits, from encouraging curiosity and nurturing a love of science and nature to developing empathy for the environment and heightening classroom outcomes.



Students at RWCC at SMART CAMPUS

Real World Challenges Convention (RWCC)

Every year the Real World Challenges Convention (RWCC) is conducted between all the GSF schools. In 2022 RWCC theme was GAIA for Gaia Green and Innovative Alternatives for Earth embracing United Nations SDGs. The convention aimed at bringing together Innovation, Creativity and Entrepreneurship in students from our school in Singapore and other Asian countries in order to build a sustainable future which is inline with the SDGs. We had over 800 participants from the various schools who enthusiastically came forward to take part in the event.

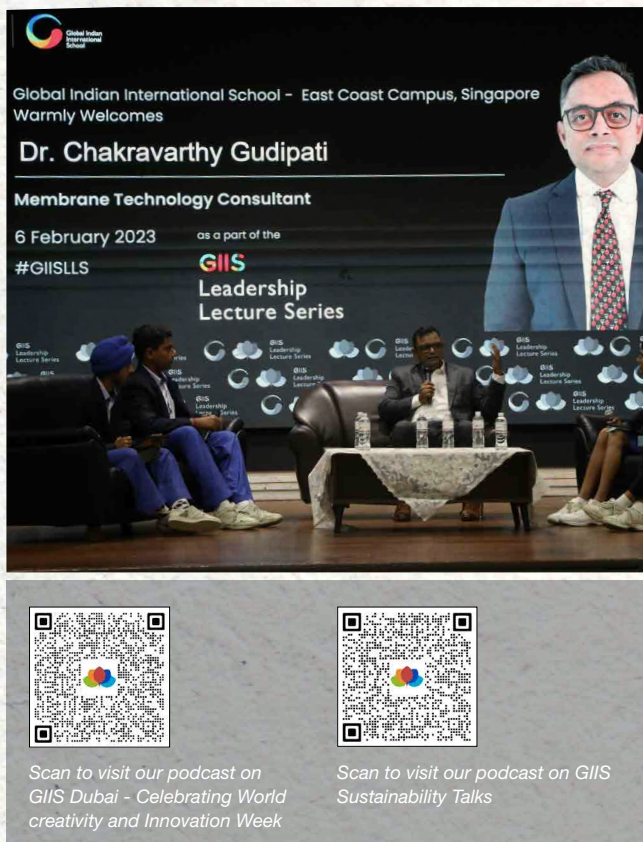
Exhibitions

Exhibitions are organised as a regular part of the school calendar. Students develop important skills such as communication, collaboration, critical thinking, and creativity, as they work together to plan, organise, and present their exhibits and projects.

Student learning : Experiential learning

Podcasts & Leadership Lecture Series

In our schools students can access a cutting-edge radio studio that enables them to refine their vocal abilities beyond what is typically covered in the curriculum, providing a platform for experimentation and skill development. We have had quite a few podcasts & Leadership lectures related to sustainability in the past.



Global Indian International School - East Coast Campus, Singapore Warmly Welcomes

Dr. Chakravarthy Gudipati

Membrane Technology Consultant

6 February 2023 as a part of the #GIISLLS

GIIS Leadership Lecture Series

Scan to visit our podcast on GIIS Dubai - Celebrating World Creativity and Innovation Week

Scan to visit our podcast on GIIS Sustainability Talks

HEALTH & NUTRITION

Schools play a critical role in promoting healthy lifestyles among students by providing access to nutritious food options and opportunities for physical activity. We have various options for Extra Curricular Activities and Co-Curricular Activities of sports, yoga and fitness.

From a young age, students are encouraged to consume healthy and nutritious food. We make an effort for our canteens provide fresh and healthy food.

HAPPINESS INDEX: THE ROAD TO HAPPINESS!

The key to happiness lies in understanding, believing in, and having a passion for one's pursuits.

Though happiness is subjective, we strive to measure and optimize it at our institutions. We have witnessed an upward trend in the indicators like feedback, attendance, referrals etc. over the past three years, which serves as affirmation that our approach to promoting student engagement and happiness is working effectively. By nurturing these key factors, we are also fostering a positive learning environment.



Students cycling to school at GIIS Tokyo

GLOBAL EXCELLENCE DAY - GED

GED is celebrated every year in September and promotes the concepts of quality and service excellence in schools through the Global Quality Circles competition. This competition allowed students to display their Quality Circles and demonstrate their efforts towards excellence. This year in 2023, the theme for Quality Circles is "GSF for Green Sustainable Future". Students have already started work on some really noteworthy and scalable projects.



Student learning : Accomplishments

STUDENT ACCOMPLISHMENTS

Our commitment at GSF transcends beyond developing academically proficient students to nurturing socially responsible students by integrating community-based initiatives into our holistic curriculum to empower our students to be good stewards and bring about positive change in the world. We are immensely proud of their achievements, both academically and beyond the classroom.

Few notable accomplishments of our students in recent years include

GIIS Singapore Student Jaidev Balaji, leader of the GIIS Hunger Warriors, worked tirelessly with his team to bring about change through various United Nations initiatives, including the Zero-Hunger project, which received the UN Global Social Leaders Impact Award in 2020.

Scan QR code to listen to podcast:



OWIS Nanyang students winning Young Reporters for Environment 2022

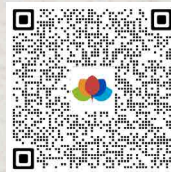
YRE programme organised annually by WWF Singapore engages participants aged 11 to 25 in environment-focused citizen journalism, encouraging them to investigate local environmental issues and solutions, and report on them through articles, photos, or videos.

Samikaasri Angia & Aditi Mohanraj were awarded 1st and 3rd place respectively for Photography. Nysa Kaprani was awarded 2nd place in Videography. Nicholas Glennie, Jake Wood, Aaron Moulik and Aditya Shimpi were awarded in the group videography category.

GIIS SMART campus students win Company of the year competition



A team of IB Year 2 students representing GIIS SMART Campus have achieved a significant milestone by winning 2nd Position in the Junior Achievement Asia Pacific Company of the Year Competition held from November 8 to 10, 2022. The Green Domino team consisting of its members Arohee Temurnikar, Omkar Dighe, Shaivi Sheth, and Jivika Bhat in the lead, made board games that educate and empower the next generation of climate activists in an enjoyable way.



Scan to hear their interview on podcast



Environmental Stewardship

We realize our responsibility to play an important role in shaping a sustainable future by educating present and future generations.



Nurturing our students into skilled, knowledgeable and caring individuals for the environment so that they can make a difference for the current as well as future generations is one of our aims but we also collaborate as an entire organisation comprising teachers, staff and management to set an example to address climate change, reduce energy and resource consumption, and promote environmentally friendly lifestyle choices.

Aligned with the SDGs



A key objective of this report is to hold ourselves accountable to the sustainability intentions, and ambitions we have set for ourselves. We acknowledge our progress and accomplishments, while understanding that this is an ongoing journey, with much more work to be done.

Environmental Stewardship

**“No one will protect what they don’t care about;
and no one will care about what they have never
experienced”**

David Attenborough

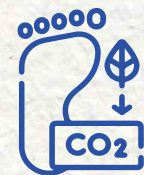


Outdoor classes at OWIS Nanyang



Student made doodle for Green and Clean city as part of inter-school (GSF) competition with Sustainability as theme

Our
Focus
Areas



Carbon footprint
mapping and
reduction



Energy & Water
conservation



Waste
management



Green building
features



School Gardens for
biodiversity and
growing food

Environmental Stewardship



Electric charging station for vehicles at Punggol Campus

Strategy for Mitigation of Carbon Emissions

Steps

- 1 Measure
- 2 Avoid Energy wastage
- 3 Energy Efficient
- 4 Renewable Energy
- 5 Offset

CARBON FOOTPRINT CALCULATION

GSF has initiated to assess, reduce and offset our carbon emissions and aim towards group level carbon neutrality. Calculating our carbon footprint is the first step to understanding how much greenhouse gases we emit and what yearly targets we can set. Our carbon mapping journey started with 4 of our schools in 2022, expanded to 7 schools by the end of the year. The measurement has been done Scope 1,2 and 3. We are in the process of collecting data from more schools in our group this year.

The measurement has been done according to the greenhouse gas protocol (<https://ghgprotocol.org>) guidelines.

The main sources of GHG emissions for us are from school's consumption of energy, mainly electricity and in scope 3 it is transport buses. We would involve the school community more in this exercise in coming cycles and would improve reporting on our scope 3 emissions in future.

GHG emissions for the year 2022

SCOPE 1

(Direct emissions from sources owned by GSF)

1.51

Emission in MTCO₂

0.027%

SCOPE 2

(Indirect emissions from purchased electricity)

4,070.03

Emission in MTCO₂

69.011%

SCOPE 3

(Indirect emissions from sources not owned or controlled by GSF)

1,706.81

Emission in MTCO₂

30.961%

Total

5,512.73

Emission in MTCO₂

Per capita emissions



INDIA

0.24

Per capita emission in MTCO₂



SINGAPORE

0.65

Per capita emission in MTCO₂



UAE

0.70

Per capita emission in MTCO₂



TOKYO

0.18

Per capita emission in MTCO₂



GSF (AVERAGE)

0.54

Per capita emission in MTCO₂

* Data from GIIS Tokyo, PG SMART Campus, East Coast, Whitefield, Hadapsar, Dubai, Abu Dhabi

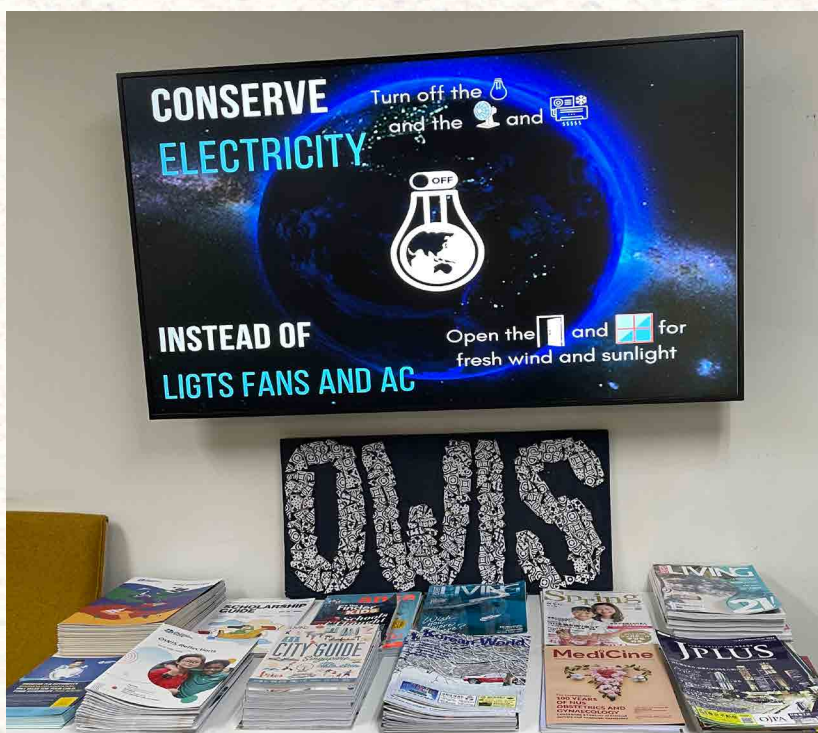
Environmental Stewardship

To reach the goal of carbon neutrality, we have to start with reducing our energy wastage and being energy efficient.

ENERGY CONSERVATION AND MANAGEMENT

We measure & monitor our electricity use in our campuses. Students are aware of the need to conserve energy and reduce waste. Regular sessions for students and staff are conducted, to make them aware of what they can do for energy conservation.

In SMART Campus, Singapore we have an ingenious management system which centrally controls the lights, air-conditioners, ventilation and water management of the entire campus, and which is designed to automatically shut down when not in use. Motion sensors present across the campus ensure that lights in the corridors and toilet clusters turn on only when they detect motion. At all other times, they remain dim or turned off - which saves huge amounts of energy.



Conserve energy
to conserve
future

9,908,546.2

Total Electricity
consumption in kWh

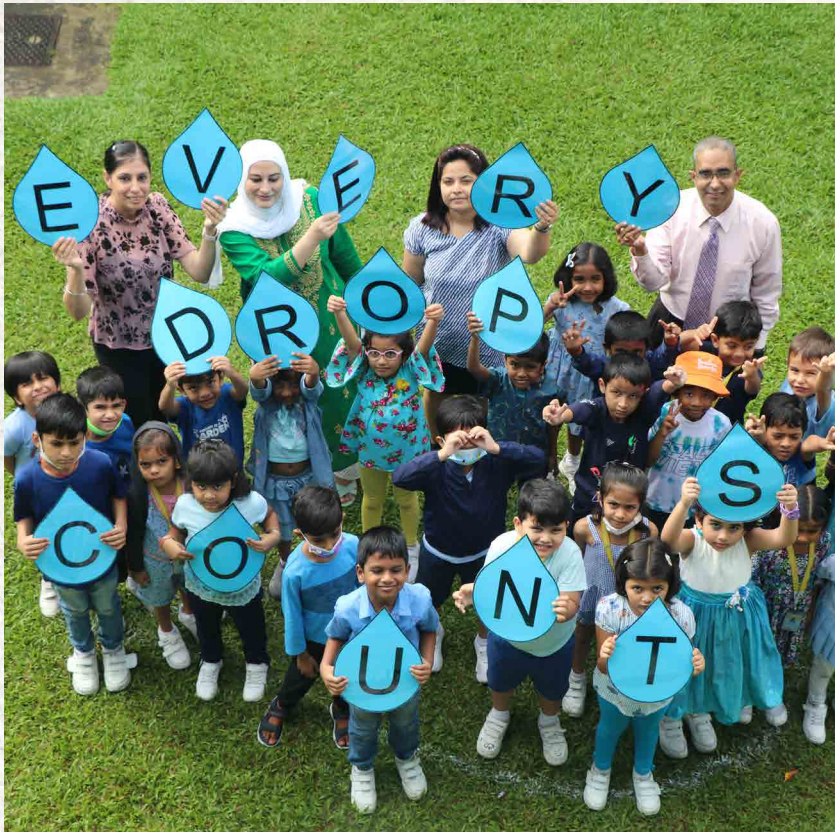
866.3

Per capita Electricity
consumption in kWh

* Data from GIIS Tokyo, PG SMART Campus, East Coast, Whitefield, Hadapsar, Dubai, Abu Dhabi, Regent International School

Environmental Stewardship

WATER CONSERVATION



Water week celebration at GISS East Coast

“Water is the most critical resource issue of our lifetime and our children’s lifetime. The health of our waters is the principal measure of how we live on the land.”

Luna Leopold

Total Water consumption in cubic m

28,698.11

Per capita water consumption in cubic m

8.83

* Data from GISS Tokyo, PG SMART Campus, East Coast, Dubai, Abu Dhabi, Regent International School

Our schools are committed to water conservation, capture and reuse on their campuses. We also monitor & measure our water use every month and aim to reduce our consumption by using it judiciously. In addition we have several measures for conserving and reducing water wastage in our different campuses.

Reusing Rainwater in Singapore

Rainwater harvesting is deployed on a very large scale, with huge water retention tanks placed 5 meters below the car parking area to store most of the rainwater falling in the campus. This is then reused to provide water to our green landscape, our water fountains etc.

NEWater, Singapore’s unique processed water, is supplied to specific, common utility areas within the campus for functions such as cleaning.

Rainwater Harvesting

Rainwater harvesting is deployed in many of our campuses. All the water from the roof is harvested via a series of pipes and then taken to the underground recharge pits, the overflow pipe is connected to the harvesting tank. The water from the harvesting tank is then used for landscaping.

Sewage Treatment Plant (STP)

In some of our schools we have STPs. It is a system that is used to clean and purify wastewater that is discharged into the environment. The entire drain and waste water from the toilets is treated through the STP and stored in the overhead tanks for landscaping thus ensuring no wastage of water.

Environmental Stewardship

WASTE MANAGEMENT

Schools produce waste mostly in the form of paper and food which provide a potential for waste minimisation and recycling. In addition we also have e-waste since we are a technology driven school. We have regular recycling drives for e-waste and paper.

Waste monitoring:

As part of calculation of scope 3 of greenhouse gas emissions, we measure how much waste our schools generate.

E-waste recycling:

As the world and us are moving towards technology driven economy, e-waste is bound to increase. We educate our students and provide them with opportunities to bring even e-waste from their home to be recycled at least once a year.

Food Waste reduction projects:

There have been significant efforts to reduce food waste in our campuses. The students enthusiastically initiated in our schools a quality circle project to reduce food waste.

Paper use monitoring:

We aim to reduce our paper use significantly. For this purpose we monitor our paper use month wise in each campus. There are different ways in which different campuses plan to reduce this. For example OWIS Nanyang has “No Print Fridays”, a student-led initiative which became school-wide.



E-waste recycling drive at GIIS KL



Food waste reduction project at GIIS East Coast



Students segregating waste at GIIS SMART Campus



P2P (Plastics to Pieces) is an innovative initiative led by Regent Students. The project aims to combat the issue of plastic waste by implementing sustainable practices and transforming discarded plastics into useful materials

Environmental Stewardship

GREEN BUILDING FEATURES

Many studies have shown the importance of natural light for physical and mental well-being of students. So our schools are designed to make ample use of natural sunlight to pour through classrooms for the benefit of students. The large corridors are also flush with natural light through tall glass curtains which gives the interiors a bright feel. The design also allows smooth flow of breeze for ventilation and fresh air, making the indoor classrooms as fresh as the open areas where students can conduct outdoor activities.

The campuses are being designed keeping in mind the green building architecture. It is not only cost-effective in the long run but also beneficial for students.



GIIS SMART Campus has fully embraced green initiatives in its design. It has got BCA Green Mark Gold certification.



Some of the features of our Punggol SMART Campus are:

Terracotta for external façade to provide thermal comfort to the users. It also saves AC energy by reducing heat effect from the external envelope.



Green Labeled material used in buildings

like, external and internal paint, carpet etc.



Green Labeled fittings in the toilet

as per PUB requirements. To save water and provide better water efficiency.



Motion sensors

In Classrooms, Studios, Offices, Corridors, Staircases, Toilets and canteen area. This helps to save energy when the room is not in use.



Landscapes

Rain Garden, Green walls, Nest area plantation



Renewable Energy

Solar panel installation on roof (Future project)

More features in our upcoming OWIS campus in Punggol



IoT System in toilet

The first school in Singapore to install an IoT system. The system automatically checks the amount of water, paper usage. It gives data to teams and schools to check their water usage daily through the DSS/ Mobile App system.



PAHU (Precision Air Handling Unit) at every floor

having PAHU at every floor can be very useful to turn off the system if the floor is not having any occupancy. This will save a lot of energy.

Environmental Stewardship

SCHOOL GARDENS

We believe that by providing hands-on experience in caring for school gardens can help students develop a deeper appreciation for the natural world and inspire them to take action to protect it. Gardens provide a unique opportunity for students to learn about biology, ecology, and environmental science. They learn about plant biology and how plants grow, the various components that make up the soil, and the role of water and sunlight in the growth of plants along with the role of pollinators and other creatures. This knowledge helps them appreciate the natural world and encourages a sense of environmental stewardship.

We focus on two aspects: Growing food and appreciating biodiversity. Growing their food gives them a sense of ownership and pride in the process. Planting of different native species and pollinator attracting plants helps create awareness about the role of biodiversity.



Students at GIIS East Coast Garden



Students harvesting in GIIS Hadapsar Campus



Kitchen and Butterfly Garden at GIIS Noida



Hydroponics at GIIS SMART Campus

Gardens also serve as a catalyst for community development. It is a place for people to come together, work collaboratively, and share in the fruits of their labor promoting social interaction and a sense of community ownership and pride. In some of our schools gardens are also used to teach entrepreneurial skills, such as marketing and selling produce. GIIS Punggol, East Coast and Noida have also experimented with hydroponics for growing eatables. We also encourage our students to bring a plant for the school garden on their birthdays.

Social Responsibility

Our organisation encompasses 35 schools and serves over 32,000 students and 2650 faculty members representing diverse backgrounds. We value and prioritise the respect of every individual in our community and aim to enhance the role of schools in cultivating and strengthening communities, fostering cultural awareness, and promoting a sense of responsibility in students and staff. Our core values include kindness and community care.



Food donation drive by GIIS Tokyo

DONATION DRIVES

GSF has always emphasised on the importance of giving back to the community by engaging in and involving with different projects from time to time and helping the society grow holistically, and our students have made sure of grabbing every opportunity available to lend a helping hand and support the community in which these future global citizens reside in. GSF – CSR activities are just a small helping hand to ensure that our overall social structure remains strong, and no one is left behind in this time of crisis.

GSF has contributed nearly S\$1.25 million towards the Singapore Indian Development Association (SINDA) towards curriculum development as well as supporting tuition programmes and educational needs of students who come from lower-income strata of society.

Aligned with the SDGs



Social Responsibility

Global Schools Foundation has donated S\$250K towards community development and welfare funds of Citizens Consultative Committees (CCC) of six constituencies in Singapore during the time of Covid-19 crises, as part of their initiatives to social responsibility.

We conduct such initiatives from time to time which are part of the Corporate Social Responsibility (CSR) of GSF which has in the past made extensive donations for public welfare and social causes which will benefit the communities in Singapore. As a non-profit organisation, Global School Foundation (GSF) organises donations to provide quality education to children who would otherwise not have access to it.

Additionally our schools keep on having donation drives for food, clothes, books and money intermittently. The school has been active in promoting universal values of brotherhood and peace through its pedagogical offerings. It has also been at the forefront in participating in activities that allow students to get acquainted with the local communities of their country of residence and extend a helping hand to those in need.

2	Abu Dhabi
2	Ahmedabad
1	Dubai
4	Hadapsar
5	Kuala Lumpur
2	Noida
1	OWIS Suntec
2	Tokyo
2	Punggol
2	EC
1	Whitefield
<input type="checkbox"/> Total no. of donation drives in 2022 School	



Charity auction of student paintings at Harrods International Academy

Social Responsibility



GHS East Coast collaborating with WWF

COMMUNITY ENGAGEMENT

Establishing and maintaining a robust and cooperative network of students, parents, and community has always been our tradition. Additionally respecting all cultures and engaging in positive relationships with local communities is also something which our students are taught.

We organise various events and activities throughout the year to raise awareness about various sustainability related causes and encourage parents and students to donate time and resources. These events include charity runs, recycling initiatives, nature trails, sports events with parents.

Our Schools have developed many forms of partnerships with other non-profit organisations and foundations to collaborate on joint efforts for sustainability, environment and charity. Such forms of partnership have positive impact and benefits for students and their families, teachers, and community as well.



OWIS students donation drive for construction workers

Collaboration with Environmental Agencies



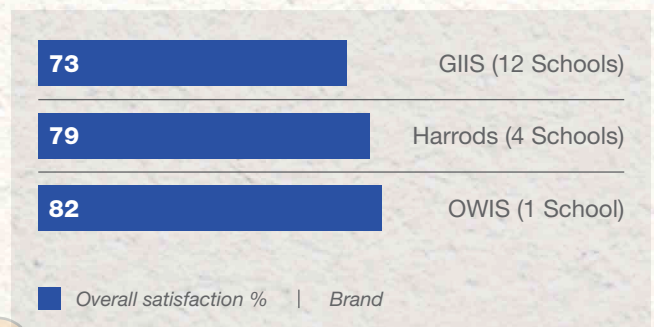
STAKEHOLDER SURVEYS

- PARENTS & STUDENT

GSF Schools conducts Customer Satisfaction (CSAT) surveys regularly to collect feedback from parents and students on various aspects of the school, such as teaching quality, facilities, communication, and other related areas. The feedback obtained from the CSAT surveys is then used by schools to identify areas that need improvement and to make changes to improve the overall satisfaction of their customers.

CSAT Analysis provides a deeper understanding of customer's genuine opinions of your brand. As a result, you can determine whether customer's opinions or attitudes towards your brand, product, or service are positive, negative, or neutral.

We consistently get good ratings from our customers, wherever there is a dip in satisfaction we act on the issues to give the best experience to our students & parents.



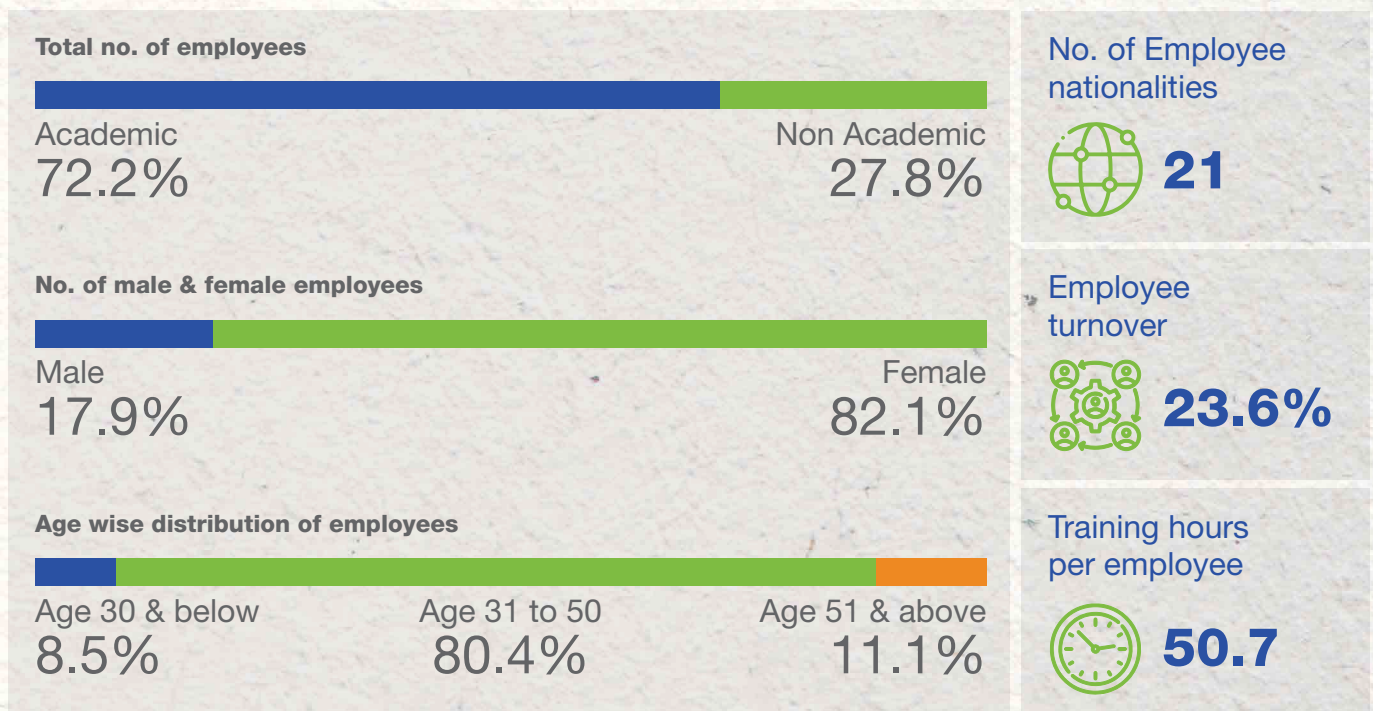
Social Responsibility

STAFF WELFARE

Staff welfare is an essential aspect of our organisation being committed to promoting a positive work environment and ensuring the well-being of its employees. These programs are essential in boosting employee morale, reducing staff turnover, and increasing productivity. As schools that learn we also provide ample opportunities for our staff to upskill themselves.

We are an equal opportunity employer and embrace diversity in race, nationality, religion, ancestry, marital status, gender, age, ethnic origin, physical ability, and sexual orientation.

EMPLOYEE DIVERSITY, TURNOVER AND TRAINING



* Data from 9 campuses (EC, PG, Dubai, Bannerghatta, Whitefield, Balewadi, Hadapsar, Noida and Ahmedabad)

Social Responsibility

HEALTH & SAFETY

Ensuring the health and safety of staff is not only a legal requirement but also a moral obligation for us. All our schools are or aim to get ISO 45001 certified, Occupational health and safety management systems – Requirements with guidance for use, offer a single, clear framework for all organisations. We aim to provide a safe and healthy workplace for employees and visitors. To achieve this, it is crucial to control all factors that might result in illness, injury, and in extreme cases death, by mitigating adverse effects on the physical, mental and cognitive condition of a person. We have regular staff health care camps and workshops for physical and mental well-being.

15
Schools
ISO 45001
certified

3
Schools
in process

All employees are provided with basic health and safety and child safeguarding training during their induction and at periodic intervals.

0	Major incidents
34	Minor incidents
76	Near Misses
<input type="checkbox"/>	No. of incidents data

* Data from all GHS campuses

EMPLOYEE ENGAGEMENT SURVEYS

In our endeavor to make our schools an ideal place to work, we conduct an Employee Satisfaction Survey every year. We encourage everyone to participate in the survey. Through the collective feedback, GSF Schools iron out the creases to make it a better place to work.

AWARDS FOR EMPLOYEES

We have an Annual Rewards Policy to reward performance in order to build an organisation culture where good work done by employees is valued and their remarkable efforts are recognised and rewarded. There are various categories of awards given to employees including teachers and all other staff members.



OWIS staff with their awards

TRAINING & DEVELOPMENT

At GSF we believe that staff training and development is crucial for the growth and success of our organisation. It helps us adapt to changing needs and scenarios and results in better customer service.

We have regular internal training for all our staff. In particular, academic staff have regular sharing sessions where they discuss various aspects of the art and science of teaching and learning. Training is also conducted through our learning management system which serves as constant online learning partner Teamie & Percipio.

Governance

Establishing, sustaining, and expanding multinational institutions requires a firm basis of sturdy governance, meticulous risk management, and well-crafted business continuity plans and procedures. The Global Schools Foundation (GSF) stands out as the world's most awarded school group and is widely recognized for its outstanding educational programs across different school brands in numerous countries.



GSF Staff at Global Annual Leadership Summit 2023

Our corporate governance structure comprises a diverse board, executive leadership team, and advisory council providing guidance to ensure transparency, accountability and fulfillment of responsibility to the community and to monitor and manage financial resources to ensure operational sustainability and good financial health.

Aligned with the SDGs



The organisation places great emphasis on fostering global citizenship and promoting sustainability. The Board meets regularly and is responsible for supervising and management of the group. The oversight of the GSF Board plays a crucial role in the development and implementation of programs that promote sustainability and social responsibility.

The senior leaders are always open to examining the pulse of the stakeholders and the environment of the schools. This happens through various mechanisms such as stakeholder feedback, periodic reviews, well-organised surveys and results in analysis besides in-depth monthly review in Campus Board Meetings. Academic Performance is also rigorously reviewed by Leadership through monthly academic board meetings.

Governance

HUMAN RIGHTS, ETHICAL BEHAVIOUR & COMPLIANCE

We are committed to integrate respect for human rights into our global operations and value chain as described in the United Nations Universal Declaration of Human Rights.

To that end, we have developed a Code of Conduct that outlines the standards of personal and professional conduct that all employees must uphold.

We expect our staff to behave in an ethical and professional manner at all times, and this code serves as the basis for maintaining a positive, productive, enjoyable, safe, and harassment-free working environment. Committees like POSCO, Safety & Security, Parent Teacher and Sexual Harassment are in place and parent representatives are a part of the School Management Committee.

To foster a positive and transparent work environment, we have developed and implemented the GSF Whistle-blower Policy, through an Independent and third party led anonymous reporting Ethics Helpline, whereby whistleblower(s) will be able to report, either anonymously or by name, the suspected workplace misconduct or instances of fraud, corruption or any unlawful or any other unethical conduct resulting in violation of GSF's & its schools' Code of Conduct.

Compliance with applicable laws and regulations is a top priority for us in all countries where we operate. Our robust internal review and audit processes involve every department, and it ensures compliance with legal and various academic boards' requirements.

PERSONAL DATA PROTECTION

At GSF, protecting personal data and respecting individuals' privacy rights is a priority. The organisation has implemented multiple measures to ensure compliance with relevant data protection laws and regulations, recognizing the importance of proper management of personal data under the Personal Data Protection Act 2012 (PDPA) to

prevent misuse. We have a privacy policy, firewall policy and information sensitivity and security policy ensuring compliance and protection to staff and students privacy.

There have been no major concerning breaches of customer privacy and loss of customer data.

EQUITY & DIVERSITY

GSF operates schools across multiple countries and recognizes the importance of managing diversity to create inclusive and equitable learning environments for all students. We recognize that a diverse leadership team enriches decision-making processes and encourages innovative solutions to complex challenges. Diversity in school management extends beyond gender, encompassing various dimensions such as ethnicity, age, cultural background, abilities, and experiences.

AUDITS & CERTIFICATIONS



ISO audit closing meeting at PG SMART Campus

ISO 9001 and ISO 21001 certifications provide schools with a structured framework for quality management and continuous improvement, leading to enhanced educational outcomes, stakeholder satisfaction, and the overall effectiveness of the school's operations. Additionally, attaining ISO 45001 certification underscores our dedication to prioritising workplace safety and well-being, ensuring a secure environment for all. Our schools undergo periodic rigorous internal reviews and audits as well.



Governance



AWARDS



Global Schools Foundation (GSF) was recognised as the World's Most Awarded Network of Schools by the UK-Based World Book of Records, on August 1, 2021. Our pursuit of excellence and our embrace of best practices within the industry has been recognised all over the world, with the foundation winning awards in Innovation, Best Practices in Education, Sustainability & CSR Activities, Business and Performance Excellence from various reputable organisations. These awards acknowledge GSF's commitment to promoting sustainable practices among students and teachers, and making a positive impact on the world.

Listed below are our recent Sustainability related Awards

Sl.No	Award Name	Year	Campus	Award for
1	Global Sustainability Awards 2021	2022	GIIS Dubai	SDG Hero-UAE Bronze
2	MILCA Award 2022 - For Academia	2022	GIIS Hadapsar	Gold - Reduce Carbon Footprint by Optimizing Energy Consumption
3	23 rd World Education 2022	2022	OWIS Nanyang	Green School Initiative
4	23 rd World Education 2022	2022	GIIS Punggol	Sustainability In Educational Institutions
5	Ninth Edition at The Pullman KLCC of The Golden Globe Tiger Award for Excellence	2022	GIIS Kuala Lumpur	Green Training
6	24 th World Education Summit (ELETS)	2022	GIIS Punggol	Green School Initiative
7	24 th World Education Summit (ELETS)	2022	GIIS Tokyo	Sustainability In Educational Institutions
8	13 th CMO Asia Excellence Awards	2022	GIIS East Coast	Best Communicating Sustainability
9	ACE -3 Stars Awarded for Quality Circle: "E-Waste Management APQO	2023	GIIS Kuala Lumpur	E-Maginatons
10	ACE -3 Stars Awarded for Quality Circle: "Reduce Carbon Footprint by Optimizing Energy Consumption " APQO	2023	GIIS Hadapsar	We Care
11	Global Sustainability Awards 2022 - GSA 2022 School Awards in the Country/State specific category.	2023	OWIS Nanyang	SDG Hero -Winner in Country/State Specific Category
12	IMC MQH - 2 nd Runner-UP	2023	GIIS Kuala Lumpur	E-waste Management - Need of The Hour
13	Global Sustainability Awards 2022	2023	HQ - GSF	SDG Superhero Group-Emerging - GSF
14	World Sustainability 9th Edition -Global Sustainability Leadership Awards 2022	2023	HQ - GSF	Global Schools Foundation
15	25 th World Education Summit (Dubai)	2023	GIIS Bannerghatta	Outstanding Green School Initiative

Governance

GLOBALS ANNUAL LEADERSHIP SUMMIT (GALS)

GALS is an annual event held to promote leadership and improvisations of the current system by brainstorming ideas, thoughts, innovative processes, and existing process enhancements for all GSF schools.

This helps us to introduce new value added services and synergies and streamline its existing processes in line with stakeholder expectations and incorporate market driven best practices to increase its value add and benefits for its customers.



CLIMATE CHANGE AND SUSTAINABILITY: A PRESSING CONCERN AT GALS 2023

The panel discussion held at GALS 2023 underscored the significance of addressing climate change and embracing sustainability throughout the school community. The leadership, along with other key stakeholders, delved deep into strategies for incorporating sustainable practices in various spheres of school life.



Climate change and sustainability as a topic of importance in GALS 2023.

The discussions revolved around implementing eco-friendly initiatives, reducing waste generation, conserving energy, and adopting renewable energy sources. Equally important was the need to embed sustainability within the curriculum.

GRATEFUL TO BE SUPPORTED BY



GRI Guidelines



GRI, also referred to as the Global Reporting Initiative, is a worldwide independent standards body that helps corporations, governments, and other groups in comprehending and conveying their impact on issues related to sustainability. The reporting aims to standardize and quantify the environmental, social and governance costs and benefits derived from the activities of the reporting companies accordingly.

These guidelines are widely recognized as the global standard for sustainability reporting. The guidelines are divided into two main components:

Reporting Principles:

The reporting principles outline the core values and principles that should guide sustainability reporting. These principles include materiality, completeness, accuracy, comparability, reliability, and stakeholder inclusiveness.

Standard Disclosures:

The standard disclosures provide a set of indicators that organisations can use to report on their sustainability performance. The indicators cover a wide range of sustainability issues, including governance, human rights, labor practices, environmental impacts, and product responsibility.

By adopting GRI guidelines, an organisation can ensure that its sustainability reporting is consistent with these global standards and demonstrate its commitment to addressing some of the most pressing global challenges.



<https://www.globalreporting.org/>

GRI GUIDELINES ADOPTED AT GSF

GRI is the world's most widely used sustainability reporting standards, which cover topics that range from biodiversity to tax, waste to emissions, diversity and equality to health and safety. The guidelines are aligned with global standards, such as the United Nations Sustainable Development Goals (SDGs) and the Paris Agreement on climate change.

It has helped companies to publish more straightforward reports relaying their non-financial performance, including their environmental and social responsibility and corporate governance structure.

It made sense to us to adopt the GRI guidelines for our first Sustainability report since it has a wider reach and acceptance.

Regarding this Report

This is the first ESG (Environment, Social and Governance) report of the global operations of Global Schools Foundation.

REPORTING PERIOD:

1st January 2022 to 31st December 2022

REPORTING BOUNDARY:

The report mainly contains data and information from our GISS Schools Abu-Dhabi, Dubai, East Coast, Punggol Smart campus, Tokyo, Whitefield, Bannerghatta, Ahmedabad, Balewadi, Kuala Lumpur, Hadapsar and Balewadi, OWIS Nanyang, Harrods International Academy Cambodia, Regent International School KL.

The availability of data varies for different data points, and this distinction is highlighted whenever feasible.

ASSURANCE:

For our inaugural Sustainability Report, we have chosen to adopt an internal assurance process. Our dedicated team has thoroughly examined all essential information to instill confidence in the data disclosed, both for management and our valued shareholders and stakeholders. While we have not sought the involvement of an external party to audit our data for this particular report, we remain open to considering this option for future reports

CONTACT US:

Your feedback is welcome.

Contact us at:

rathin@myglobalschool.org

smita.w@globalindianschool.org

GRI Content Index

Statement of use	Global Schools Foundation has reported in accordance with the GRI standards for the period of January 2022-December 2022
GRI 1 used	GRI 1: Foundation 2021

GRI Standard	Disclosure	Location/URL/ Reason for omission
General Disclosures		
GRI 2: General Disclosures 2021	2-1. Organisational details	Page 4,5,6
	2-2. Entities included in the organisation's sustainability reporting	Page 44
	2-3. Reporting period, frequency and contact point	Page 44
	2-4. Restatements of information	Not applicable as it is our first ESG report
	2-5. External assurance	Page 44
	2.6. Activities, value chain and other business relationships	Page 4
	2.7. Employess	Page 4,37
	2.9. Governance structure and composition	https://www.gsf.info/about/managementteam , Page 39
	2.14 Role of the highest governance body in sustainability reporting	Page 14,39
	2-22 Statement on the sustainable development strategy	Page 8-11
	2-23 Policy commitments	Page 12, 40
	2.24 Embedding policy commitments	Page 40-42
	2.25 Process to remediate negative impacts	Page 40, 42
	2.29 Approach to stakeholder engagement	Page 17-20,36,38
Material Topics		
GRI 3: Material Topics 2021	3-1. Process to determine material topics	Page 13
	3-2. List of material topics	Page 13
	3-3. Management of material topics	Page 15, In specific topic management disclosure
GRI 302: Energy 2016	1.1. Topic management disclosure	Page 15,29,32
	302-1. Energy consumption within the organisation	Page 29
	302-3. Energy intensity	Page 29
GRI 303: Water and Effluents 2018	1.1 Topic management disclosure	Page 15,30,32
	303-5. Water consumption	Page 30
GRI 304: Biodiversity 2016	1.1. Topic management disclosure	Page 33


GRI Content Index

GRI Standard	Disclosure	Location/URL/ Reason for omission
Material Topics		
GRI 306: Emissions 2016	1.1. Topic management disclosure	Page 15,28
	305-1. Direct (Scope 1) GHG emissions	Page 28
	305-2. Direct (Scope 2) GHG emissions	Page 28
	305-3. Other indirect (Scope 3) GHG emissions	Page 28
	305-4. GHG emissions intensity	Page 28
GRI 306: Waste 2020	1.1. Topic management disclosure	Page 15,18,31
	306-1. Waste generation and significant waste related impacts	Page 31
	306-2. Management of significant waste related impacts	Page 31
GRI 401: Employment 2016	1.1. Topic management disclosure	Page 15,34,37
	401-1. New employees hires and employees	Page 37
GRI 403: Occupational Health and Safety 2018	1.1. Topic management disclosure	Page 15,38
	403-1. Occupational health and safety management system	Page 38
	403-5. Worker training on occupational health and safety	Page 38
	403-6. Promotion of worker health	Page 37-38
GRI 404: Training and Education 2016	1.1. Topic management disclosure	Page 15-24,38
	404-1. Average hours of training per year per employee	Page 37
GRI 405: Diversity and Equal Opportunity 2016	1.1. Topic management disclosure	Page 40
	405-1. Diversity of governance bodies and employees	Page 37,40
GRI 412: Human Rights Assessment	1.1. Topic management disclosure	Page 40
GRI 413: Local Communities 2016	1.1. Topic management disclosure	Page 15,36
	413-1. Operations with local community engagement, impact assessments, and development programs	Page 34,35,36
GRI 416: Customer Health and Safety 2016	1.1. Topic management disclosure	Page 38-40
	416-2. Incidents of non-compliance concerning the health and safety impacts of products and services	Page 40
GRI 418: Customer Privacy 2016	1.1. Topic management disclosure	Page 40
	418-1. Substantiated complaints concerning breaches of customer privacy and losses of customer data	Page 40



Global Schools Foundation Worldwide Headquarters

27, Punggol Field Walk, Singapore 828649

 : +65 6914 7000

www.gsf.info